

HabasitLINK[®]

M5182 Roller Top - 90° 2"

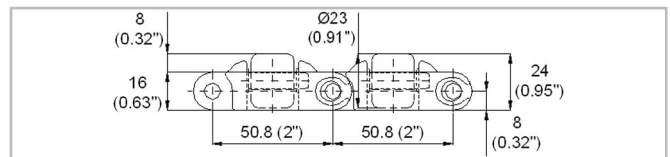
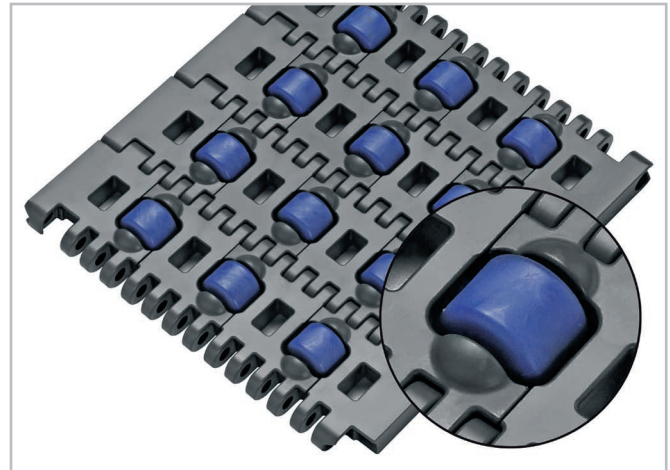


Your Source For Habasit
Belting And Chain

www.StilesEnterprises.com • 1-800-325-4232

Description

- Designed for easy 90° transfer
- Imperial belt width
- Large robust roller with diameter 23 mm (0.9")
- Roller distance 50 mm (2")
- Smart-Fit rod retention
- Rod diameter 7 mm (0.27")
- Closed hinge
- Indent 50 mm (2")
- Lug teeth sprockets



Belt data

Belt material		PP		POM	
Rod material		POM		PA	
Roller material		PA		POM	
Nominal tensile strength F' _N	N/m lb/ft	20000 1370	20000 1370	40000 2740	40000 2740
Temperature range	°C °F	5 - 93 40 - 200	5 - 105 40 - 220	-40 - 93 -40 - 200	-40 - 93 -40 - 200
Belt weight m _B	kg/m ² lb/sqft	13.5 2.76	13.5 2.76	18.5 3.79	18.5 3.79

Diameter of idling rollers (minimum)		Diameter of support rollers (minimum)		Diameter for gravity take-up and center drive rollers (minimum)		Backbending radius for elevators without sideguards or hold down devices (minimum)	
mm	inch	mm	inch	mm	inch	mm	inch
90	3.5	100	4	150	6	150	6

Standard range of belt widths b₀

mm (nom.)	152	203	254	305	356	406	457	508	559	610	660	711	762	etc.
inch (nom.)	6	8	10	12	14	16	18	20	22	24	26	28	30	etc.

Real belt widths are in most cases 0.1% to 0.3% smaller.

Standard belt widths in increments of 2.0" (50.8 mm). Cut width: Standard belt width - 0.5" (- 12.7 mm).

For detailed material properties refer to the HabasitLINK[®] Engineering Guidelines or contact your Habasit representative.

The nominal tensile strength is valid for 23 °C (73 °F). The admissible tensile force depends on the operating temperature near the drive sprockets. Within the temperature range allowed, the admissible tensile force may vary from 100% to 20% of the nominal tensile strength. For detailed information and correct calculation of effective tensile force refer to the Calculation Guide in the HabasitLINK[®] Engineering Guidelines.